

## BODY COVERS Hides screws for a sleek look

**360HC-19H26-NI**  
(19 and 26 mm OVERLAY)



- Available Hinge  
360 (19 mm overlay type)  
H360 (26 mm overlay type)

**360HC-9H16-NI**  
(9 and 16 mm OVERLAY)



- Available Hinge  
360 (9 mm overlay type)  
H360 (16 mm overlay type)

**360HC-0H0-NI**  
(INSET)

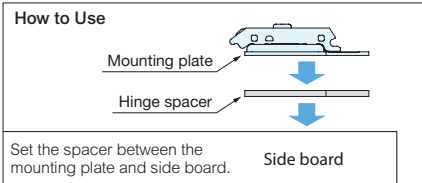
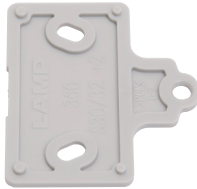


- Available Hinge  
360 (inset type)  
H360 (inset type)

Item No.	Material	Finish	Weight (g)
360HC-19H26-NI	Steel	Nickel Plating	2.6
360HC-9H16-NI			2.2
360HC-0H0-NI			2.7

## HINGE SPACERS

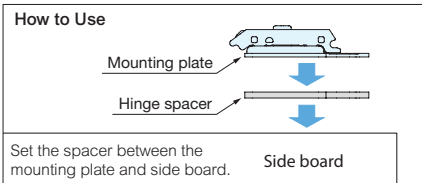
**360-DP2-P4** 2 mm Thick  
for 2 Holes / OLYMPIA Series



- Decreases overlay of outset doors by 2 mm.
- Increases clearance of inset doors by 2 mm.
- Can be doubled for 4 mm thickness.
- Available Mounting Plate:  
360-P4W-30T  
360-P4W-30T+5  
360-P4W-32T  
360-P4W-32T+5

Item Name	Material	Color	Weight (g)	Box (pcs)	Carton (pcs)
360-DP2-P4	POM	Grey	2.6	50	500

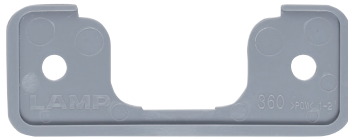
**360-DP2-P6** 2 mm Thick  
for 4 Holes / OLYMPIA Series



- Decreases overlay of outset doors by 2 mm.
- Increases clearance of inset doors by 2 mm.
- Can be doubled for 4 mm thickness.
- Available Mounting Plate:  
360-P6WT  
360-P6WT+5

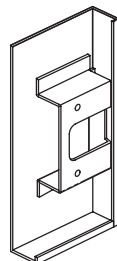
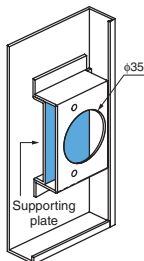
Item No	Material	Color	Weight (g)	Box (pcs)	Carton (pcs)
360-DP2-P6	POM	Grey	2.9	50	500

## SHEET METAL SPACER 360-BCS



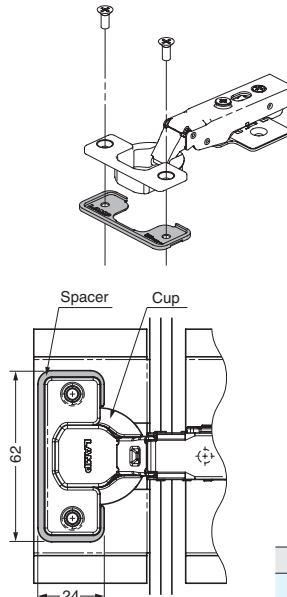
• Without the spacer

• With the spacer

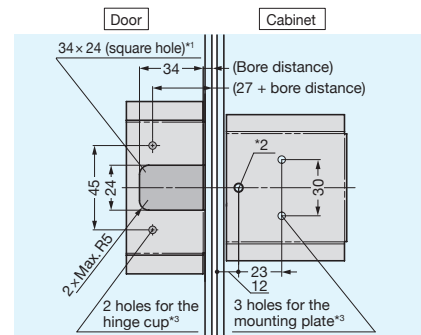


Supporting plates are required at the depth of 11 mm below the hinge cup.

No supporting plates are needed.



- Allows for easier mount on sheet metal of the Olympia hinges. (Cup diameter: 35 mm)



\*1: No supporting plates for hinge cups are needed.  
\*2: Please process chamfering on the holes. (ø 5.1)  
\*3: Female threading is required including nut welding and burring process. (Recommended size: M4)

Item No	Material	Box (pcs)
360-BCS	POM	500