

BI-FOLD LIFT ASSIST STAY



HBF-ELAN

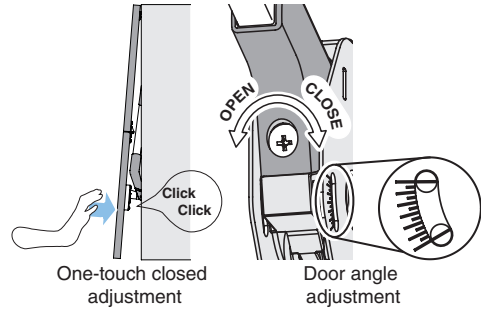
LID SUPPORTS

HORIZONTAL BI-FOLDING DOOR MECHANISM

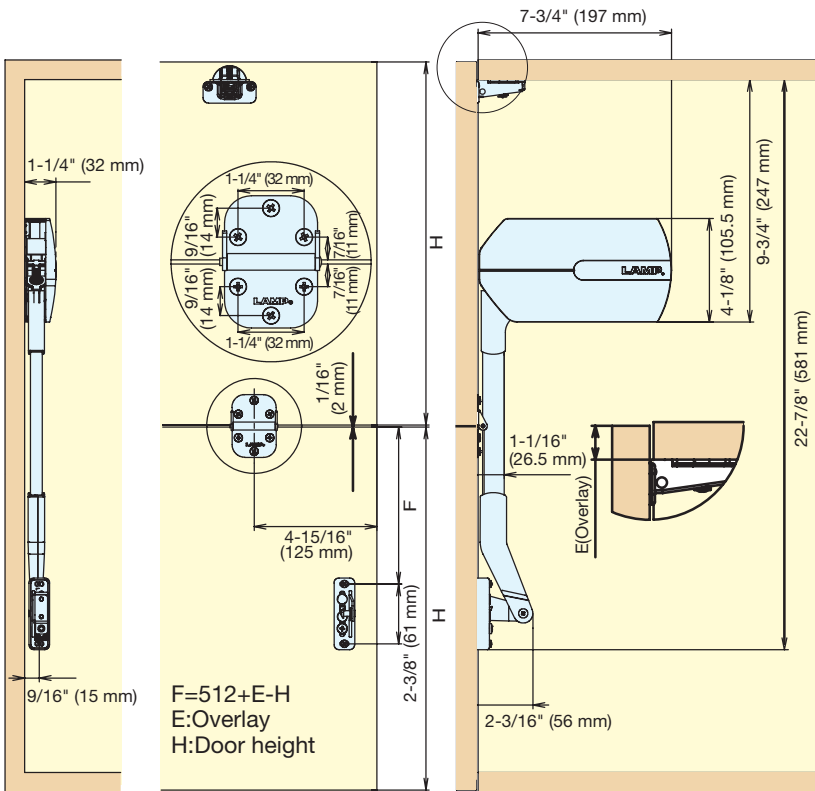
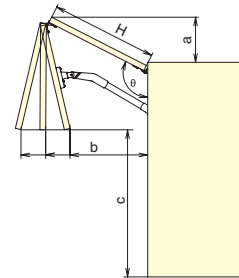


- Unique new bi-fold door mechanism will assist in opening and closing doors in a smooth motion.
- No tracks or guides required.
- Handle position can be at the bottom of the door.
- Arm length adjustable for various door sizes.
- Patented LAPCON technology provides smooth and quiet motion.
- Recommended Door Size and Weight):
 Width: 17-23/32" ~ 35-7/16" (450~900 mm) / each door
 Height: 12-19/32" ~ 14-9/16" (320~370 mm) / each door
 Weight: 5.5 ~ 12.1 lbs (2.5~5.5 kg) / each door

Multiple Adjustments



Opening Dimensions



Item No	Door Weight /door	Weight	Carton (set)
HBF-ELAN-LL	5.5 ~ 7.7 lbs (2.5~3.5 kg)	5.7 lbs (2.6 kg)	5
HBF-ELAN-ML	7.2 ~ 9.0 lbs (3.3~4.1 kg)		
HBF-ELAN-MM	9.0 ~ 10.8 lbs (4.1~4.9 kg)		
HBF-ELAN-HM	10.8 ~ 12.5 lbs (4.9~5.7 kg)		
HBF-ELAN-HH	12.5 ~ 14.3 lbs (5.7~6.5 kg)		

Material	Finish
Aluminium Alloy, ABS	Anodized/Light Grey

Opening Angle	H: Door Height								
	12-5/8" (320 mm)			13-3/4" (350 mm)			14-9/16" (370 mm)		
	A	B	C	A	B	C	A	B	C
105°	2-1/4" (58 mm)	14-5/16" (364 mm)	13-7/16" (341 mm)	2-9/16" (65 mm)	13-11/16" (348 mm)	14-11/16" (373 mm)	2-3/4" (69 mm)	12-3/8" (314 mm)	15-11/16" (399 mm)
110°	3-3/8" (85 mm)	14-5/16" (364 mm)	14-1/2" (369 mm)	3-11/16" (93 mm)	13-9/16" (344 mm)	15-13/16" (402 mm)	3-7/8" (99 mm)	11-15/16" (303 mm)	17" (431 mm)
120°	5-1/4" (134 mm)	14-1/8" (359 mm)	16-11/16" (424 mm)	5-13/16" (148 mm)	13" (330 mm)	18-1/16" (459 mm)	6-3/16" (157 mm)	10-5/8" (270 mm)	19-3/8" (492 mm)